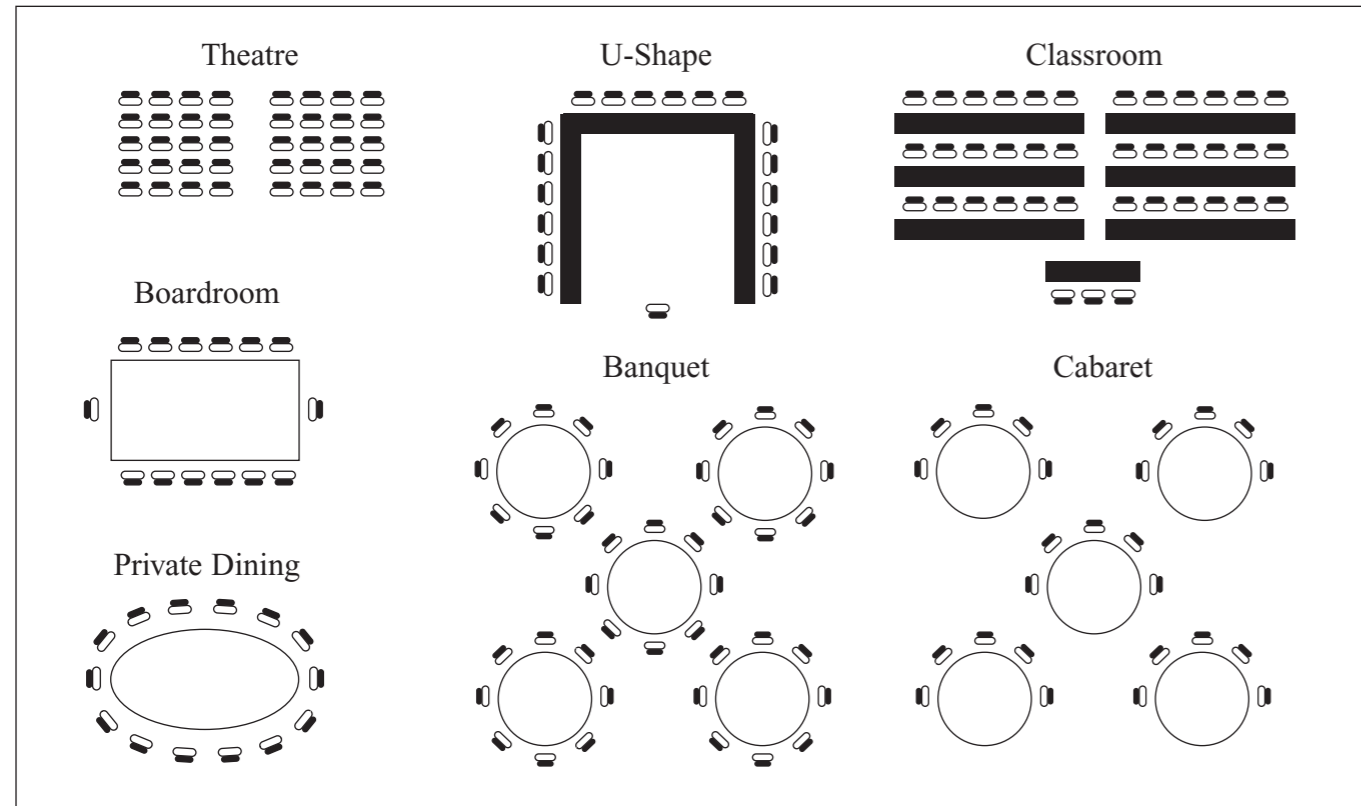


ROOM LAYOUTS & CAPACITIES



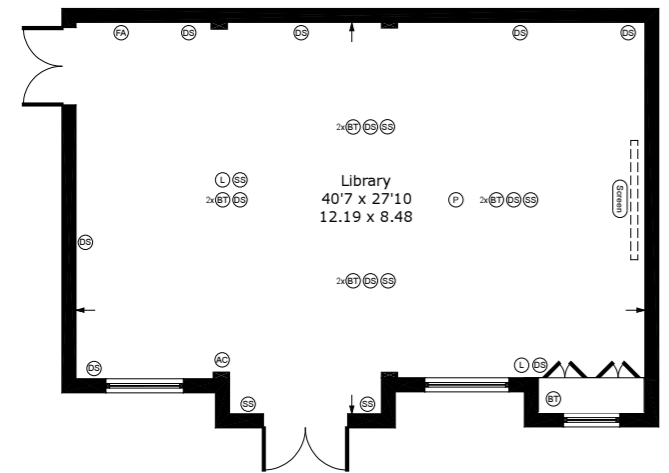
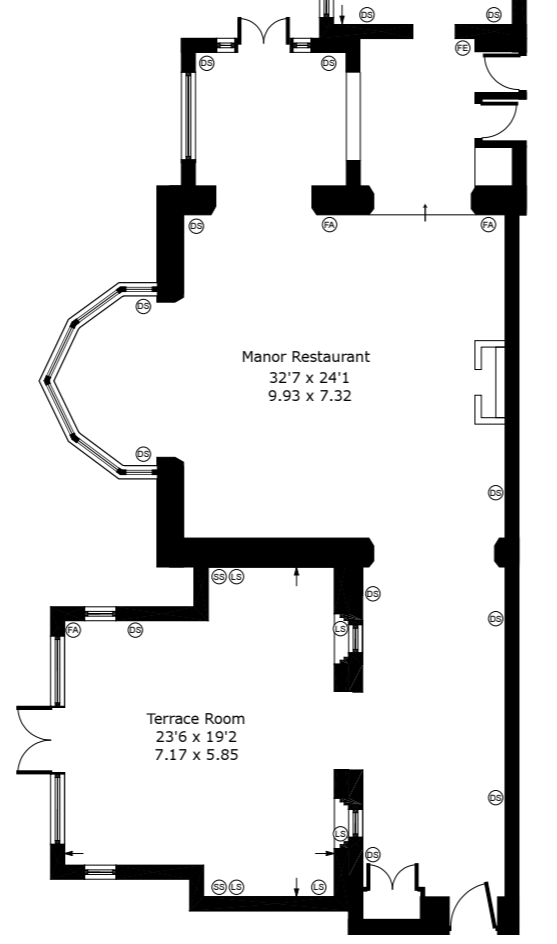
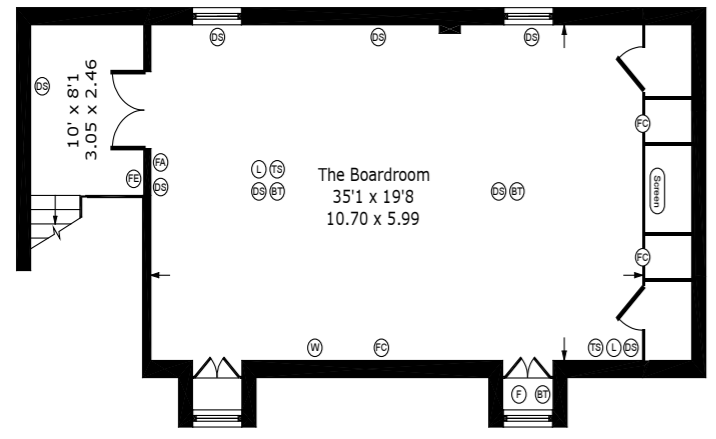
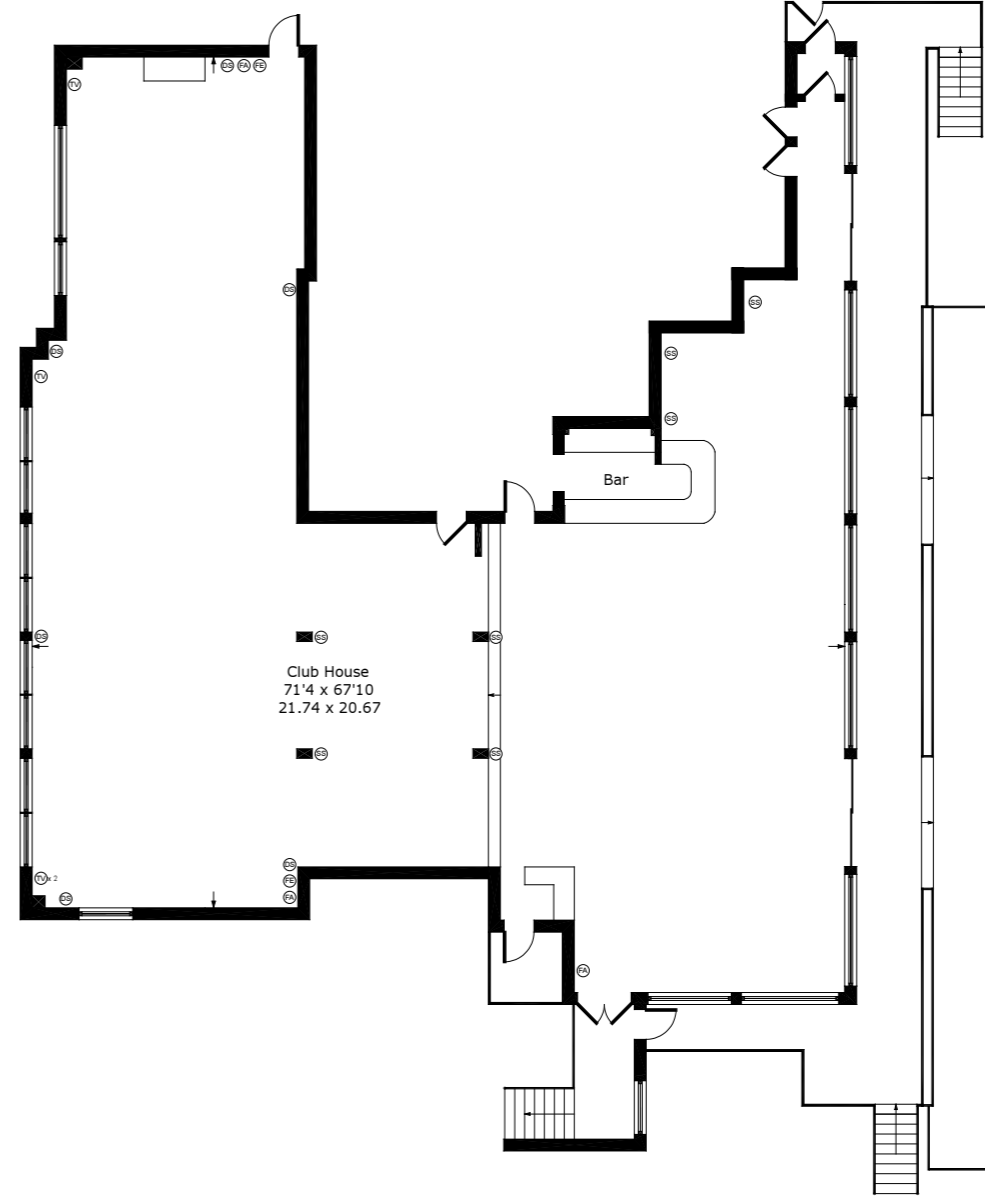
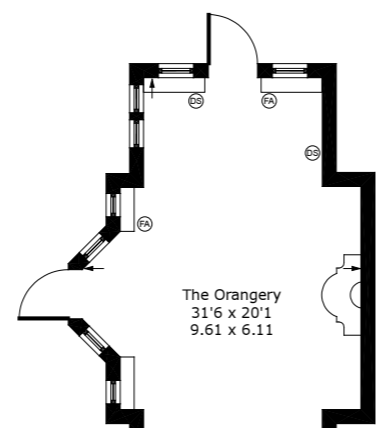
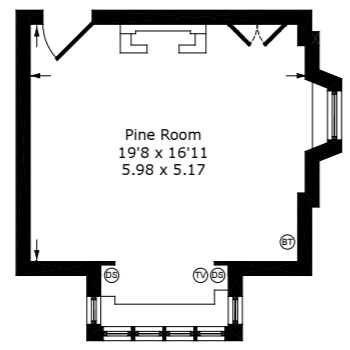
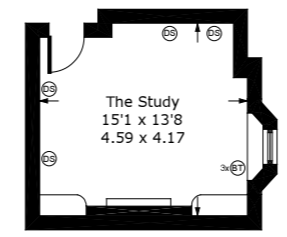
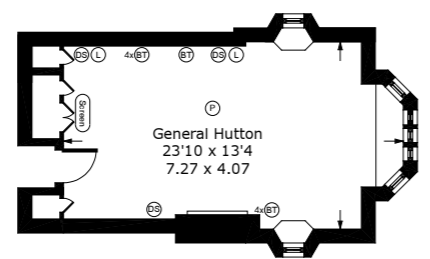
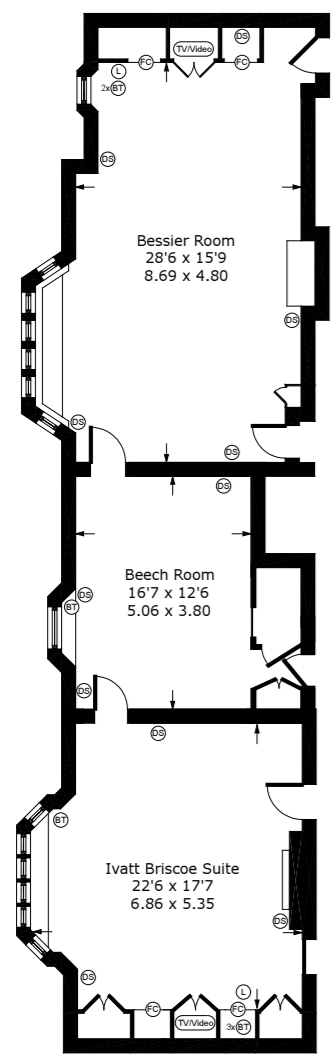
CONFERENCE & BANQUETING ROOMS

Room Name	Length (M)	Width (M)	Ceiling Height (M)	Theatre Style	Boardroom Style	Cabaret Style	U Shape Style	Classroom Style	Private Dining
Boardroom	11.0	6.0	2.5	N/A	24	N/A	29	N/A	N/A
Library	12.0	7.8	2.75	60	30/44 Double B/R	30 6 per table	38	36	60
Bessier	9.4	5.2	3.0	25	22	N/A	N/A	16	24
Clubhouse	20.0	6.3	2.4	150	On Request	60	50	60	180
Ivatt Briscoe	6.4	4.9	3.0	20	14	N/A	13	12	N/A
Hutton Room	6.0	4.0	3.0	N/A	10	N/A	N/A	N/A	N/A
Beech	4.9	3.6	3.0	N/A	4	N/A	N/A	N/A	Private Drinks Reception
Pine	5.8	4.9	3.5	20	14	N/A	N/A	N/A	16
Study	3.8	4.9	3.5	N/A	6	N/A	N/A	N/A	8

Foxhills



- Ⓛ Double Socket
- Ⓢ Single Socket
- ⓕ Flip Chart
- Ⓦ Whiteboard
- Ⓣ Telephone Point / Broadband
- Ⓣ Television Point
- ⓕ Fire Alarm
- ⓕ Fire Extinguisher
- Ⓣ Touch Screen
- ⓐ Air Conditioning Control
- ⓕ Fridge
- ⓐ Projector
- Ⓛ Laptop Input



Foxhills Conference Suite

Approximate Gross Internal Floor Area :

General Hutton	28 m ² / 302 ft ²
Beech Room	22 m ² / 237 ft ²
Club house	334 m ² / 3599 ft ²
Pine Room	35 m ² / 377 ft ²
Ivatt Briscoe Suite	36 m ² / 388 ft ²
Library	100 m ² / 1074 ft ²
Bessier Room	49 m ² / 522 ft ²
Terrace Room	37 m ² / 397 ft ²
The Boardroom	74 m ² / 796 ft ²
The Orangery	45 m ² / 488 ft ²
Dining Hall	111 m ² / 1199 ft ²
The Study	18 m ² / 194 ft ²
Total	889 m² / 9573 ft²